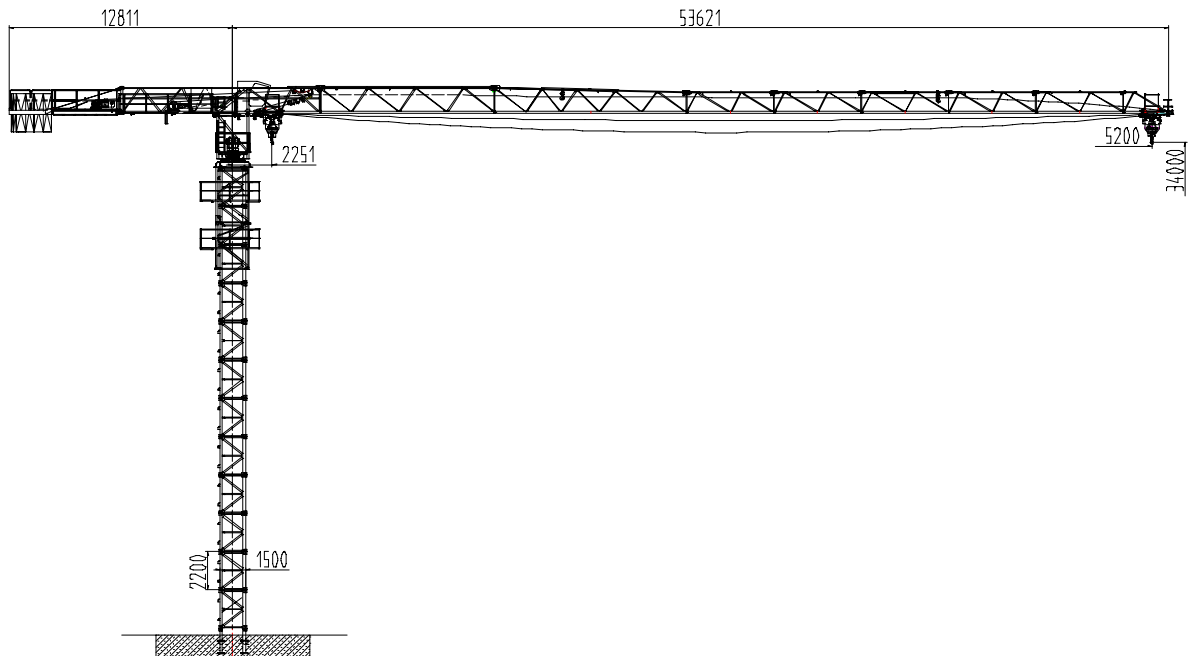


TCP5210 Technical Parameter

Lifting moment t.m		63T.M			
Max load t		5			
Free standing Height m		34			
Max height with anchorage m		121			
Lifting	Rates	Speed (m/min)		Load (T)	Power (kw)
	4	I	5	5	15/15/3.5
		II	17.5	5	
		III	35	2.5	
	2	I	10	2.5	
		II	35	2.5	
III		70	1.25		
Slewing		0.54 (r/min)		2.2X2	
Trolleying		20/40 (m/min)		3.3/2.2	
Climbing		0.5 (m/min)		5	
Mast size		1 600X1 600X2 500 mm			
Power		380V	50Hz	28KW	

Overall dimension of Free standing height (mm)



Loading Chart- **Rates=4**

R(m)	2.5~12.08	13	14	15	16	17	18	19	20	21	22	23	24	25
Q(t)	5.00	4.63	4.28	3.97	3.71	3.47	3.27	3.08	2.90	2.76	2.62	2.50	2.38	2.27
R(m)	26	27	28	29	30	31	32	33	34	35	36	37	38	39
Q(t)	2.18	2.09	2.00	1.92	1.85	1.78	1.72	1.66	1.60	1.55	1.50	1.45	1.40	1.36
R(m)	40	41	42	43	44	45	46	47	48	49	50	51	52	
Q(t)	1.32	1.30	1.24	1.21	1.17	1.14	1.11	1.08	1.05	1.03	1.00	0.97	0.95	

Rates= 2

R(m)	2.5~23.39	24	25	26	27	28	29	30	31	32	33	34	35	36
Q(t)	2.50	2.43	2.32	2.23	2.14	2.05	1.97	1.90	1.83	1.77	1.71	1.65	1.60	1.55
R(m)	37	38	39	40	41	42	43	44	45	46	47	48	49	50
Q(t)	1.50	1.45	1.41	1.37	1.35	1.29	1.26	1.22	1.19	1.16	1.13	1.10	1.08	1.05
R(m)	51	52												
Q(t)	1.02	1.00												



